

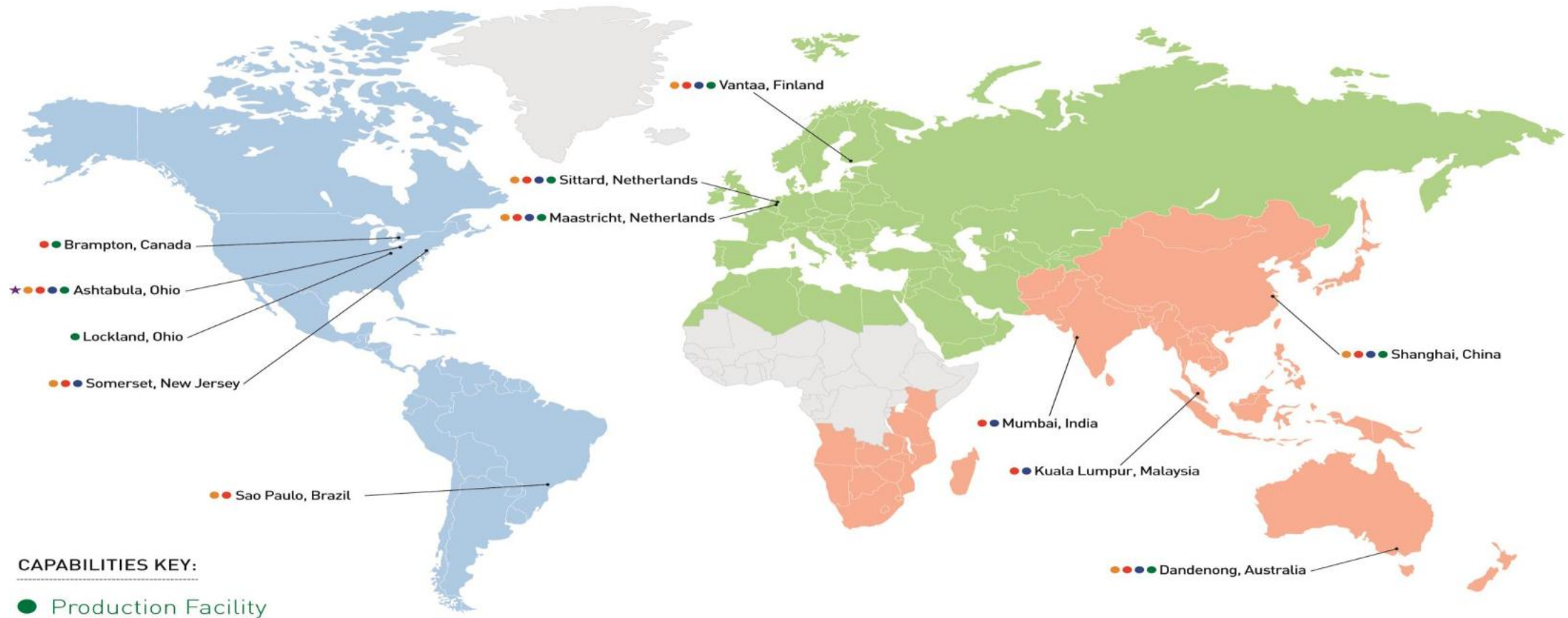
Chromaflo Technologies Europe BV

Industrial Waterbased Coloring Solutions

October 2016

Johan Wolters

Chromaflo Technologies - Global



CAPABILITIES KEY:

- Production Facility
- Sales
- Technical
- Customer Service Center
- ★ Headquarters

Our global footprint allows us to create greater value and provide expanded opportunities for our customers.

Chromaflo EMEA Key Operating Figures



EMEA region :

- Sales revenue of 125 M€ in 2014
- 3 operating facilities

Vantaa (Finland, no solvent production)

4.500 t/a production, mainly for Nordic area.

Sittard (Netherlands, solvent and water facility)

7.500 t/a production, main hub for EMEA.

Maastricht (Netherlands, solvent and water facility)

5.000 t/a production, majority industrial.

Overall EMEA facts.

- 17.000 t/a of colorants of which 7.500 t/a No VOC
- 260 employees
- 60 Technical functions (R&D and color science)
- In total > 1200 different formulations produced
- > 35 different technologies



Vantaa (Finland)



Sittard (The Netherlands)



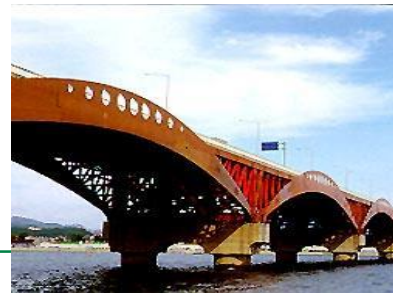
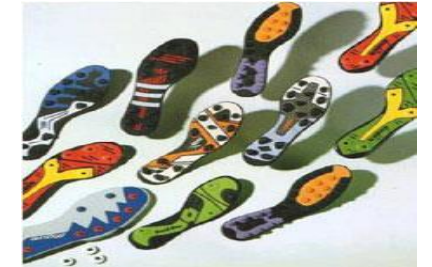
Maastricht (The Netherlands)

Market Applications



Paints & Coatings

- Architectural
- Industrial Maintenance
- Marine
- Concrete Protective
- Automotive Interiors
- Automotive Refinish
- Wood
- Furniture & Kitchen



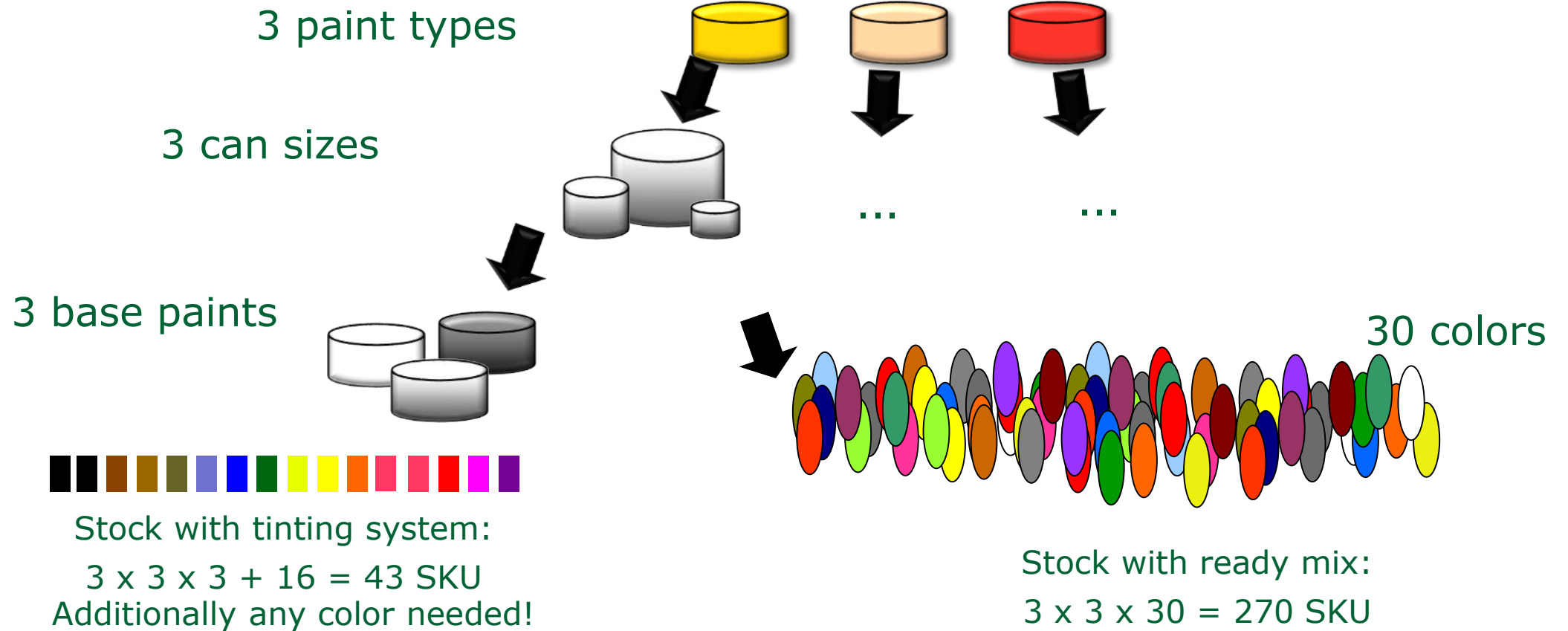
Thermoset Plastics

- Automotive
- Housing
- Heavy Truck
- Electrical
- Recreation
- Construction

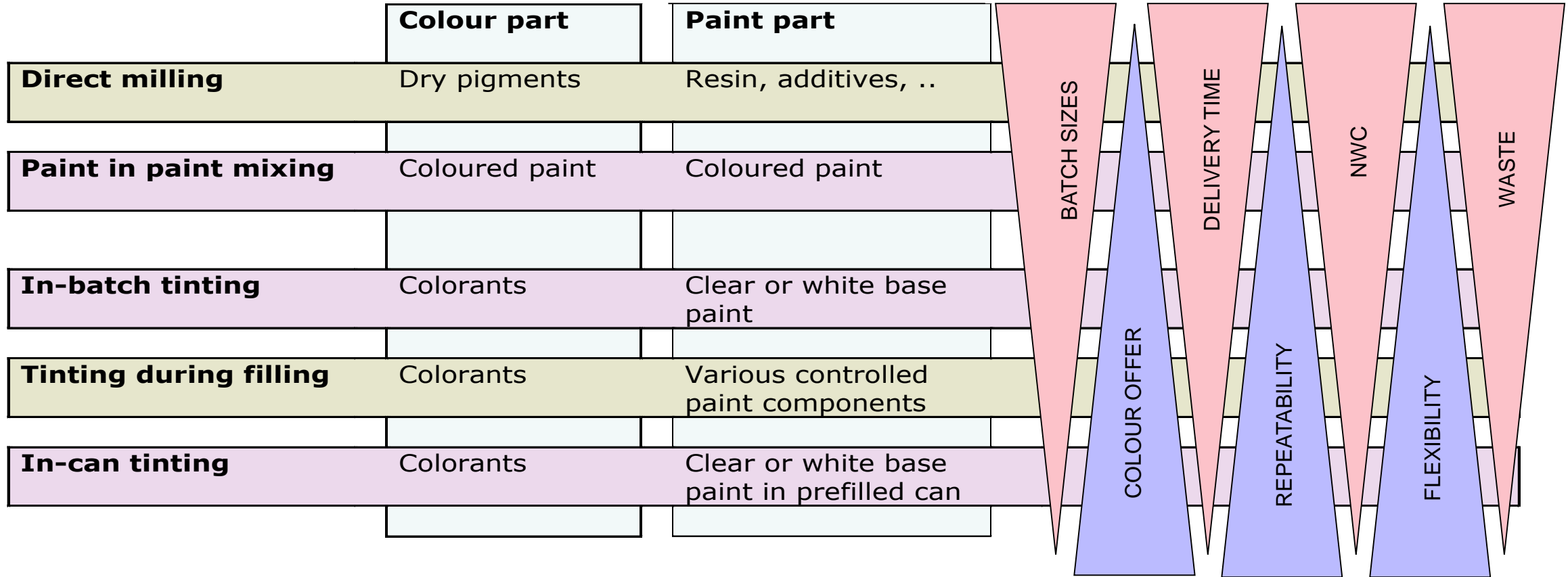


- **Waterbased technologies are diversifying**
- **Applications: protective, flooring, marine, refinish, etc.**
- **Higher need for colour variation - from 200 -> 2000 shades and more**
- **Various price/quality levels required**
- **Time to market more important**

Complexity Decrease with a Tinting System



Production of Colored Paint

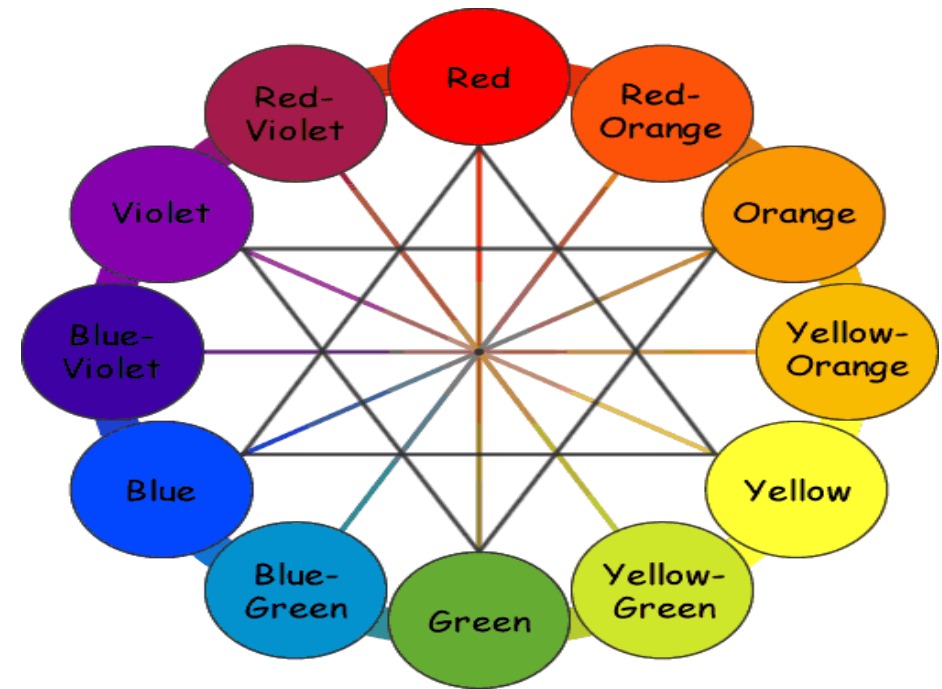
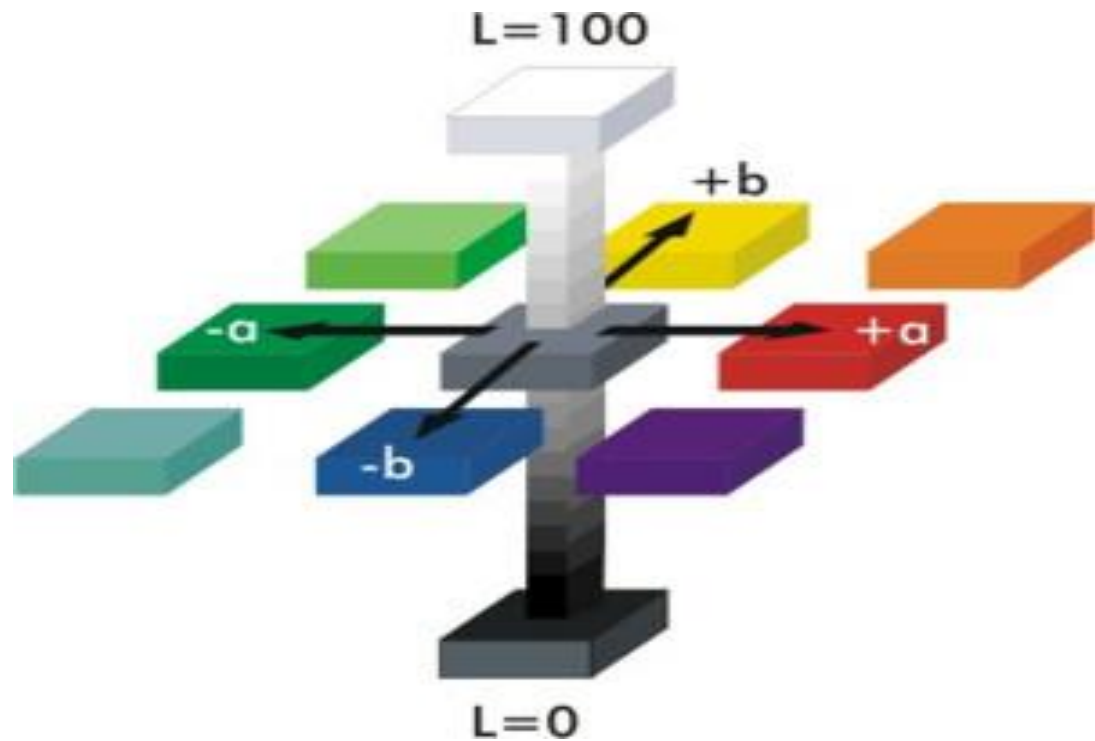


How to Build a Tinting System

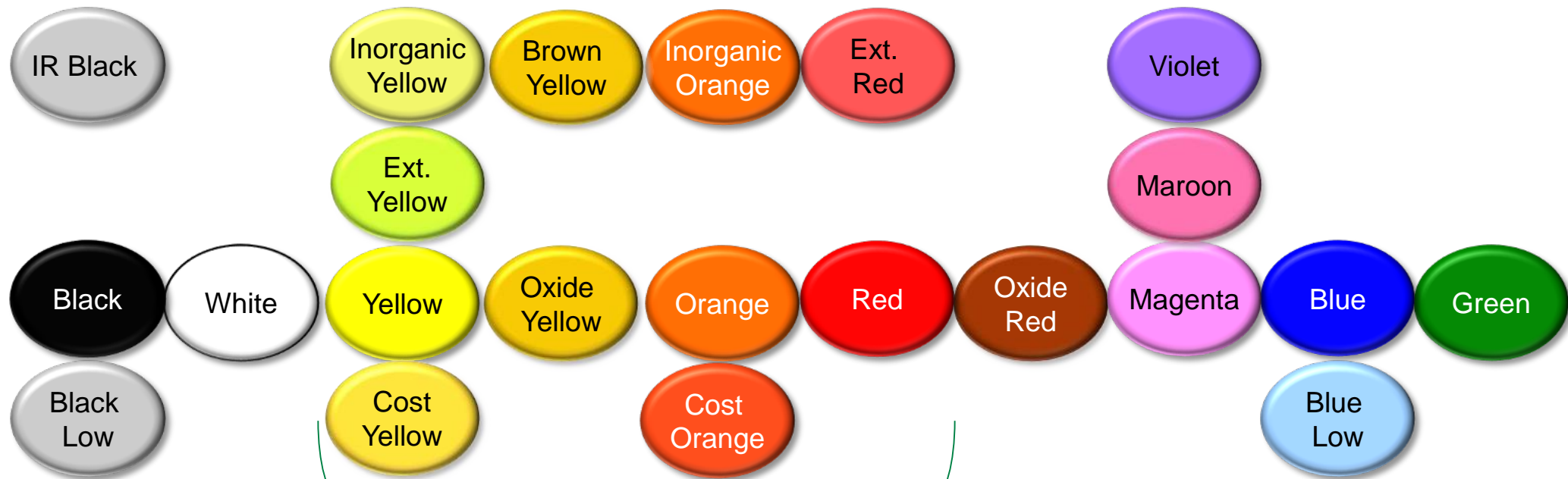


Choosing Colorants for a System

- For good coverage of the color space at least primary and secondary colors are required.



Possibilities for System Built up - CHOOSE



Most options depending on need

Chromaflo Industrial water-borne lines

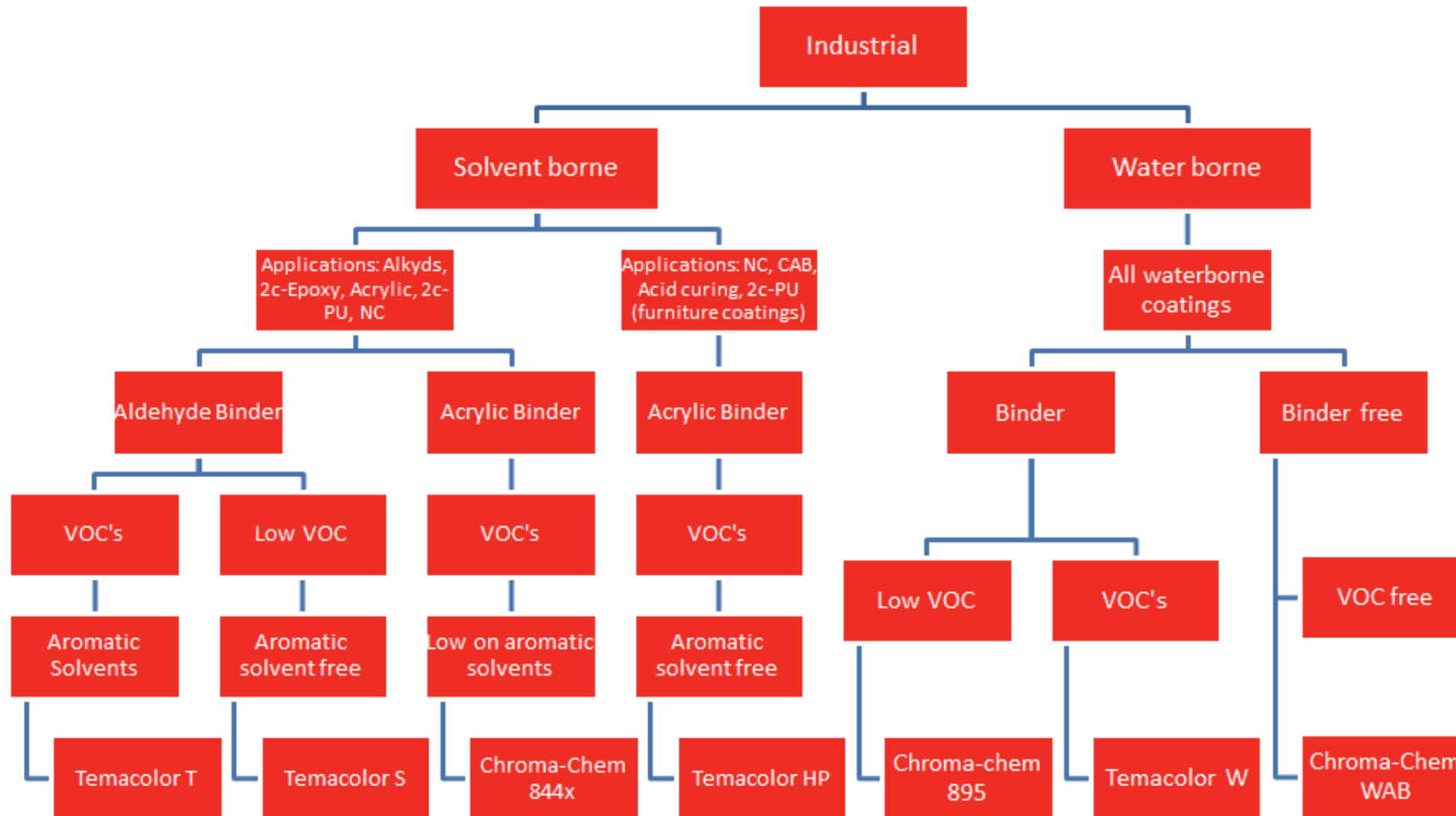


Colorant line	Carrier	VOC (g/l)	APE	Application
Temacolor® W	Aldehyde	< 100	No	Industrial Coatings; Wood & Furniture Coatings; Protective & Marine Coatings; Concrete Protection & Flooring
Chroma Chem WAB	none	< 1	No	Industrial Coatings; Wood & Furniture Coatings; Protective & Marine Coatings; Concrete Protection & Flooring
Chroma Chem 895	Ketone resin/PEG	< 10	No	Industrial Coatings; Wood & Furniture Coatings; Protective & Marine Coatings; Concrete Protection & Flooring
Novapint D/E	none	< 1	No	Originally designed for Architectural, add on to the industrial systems

Also Colorant Technologies are more and more mixed depending on individual customer need



Product Selector Water- and Solventborne Industrial



Johan Wolters

Head of Sales EE

+31 6 57599910

j.wolters@chromaflo.com

www.chromaflo.com

